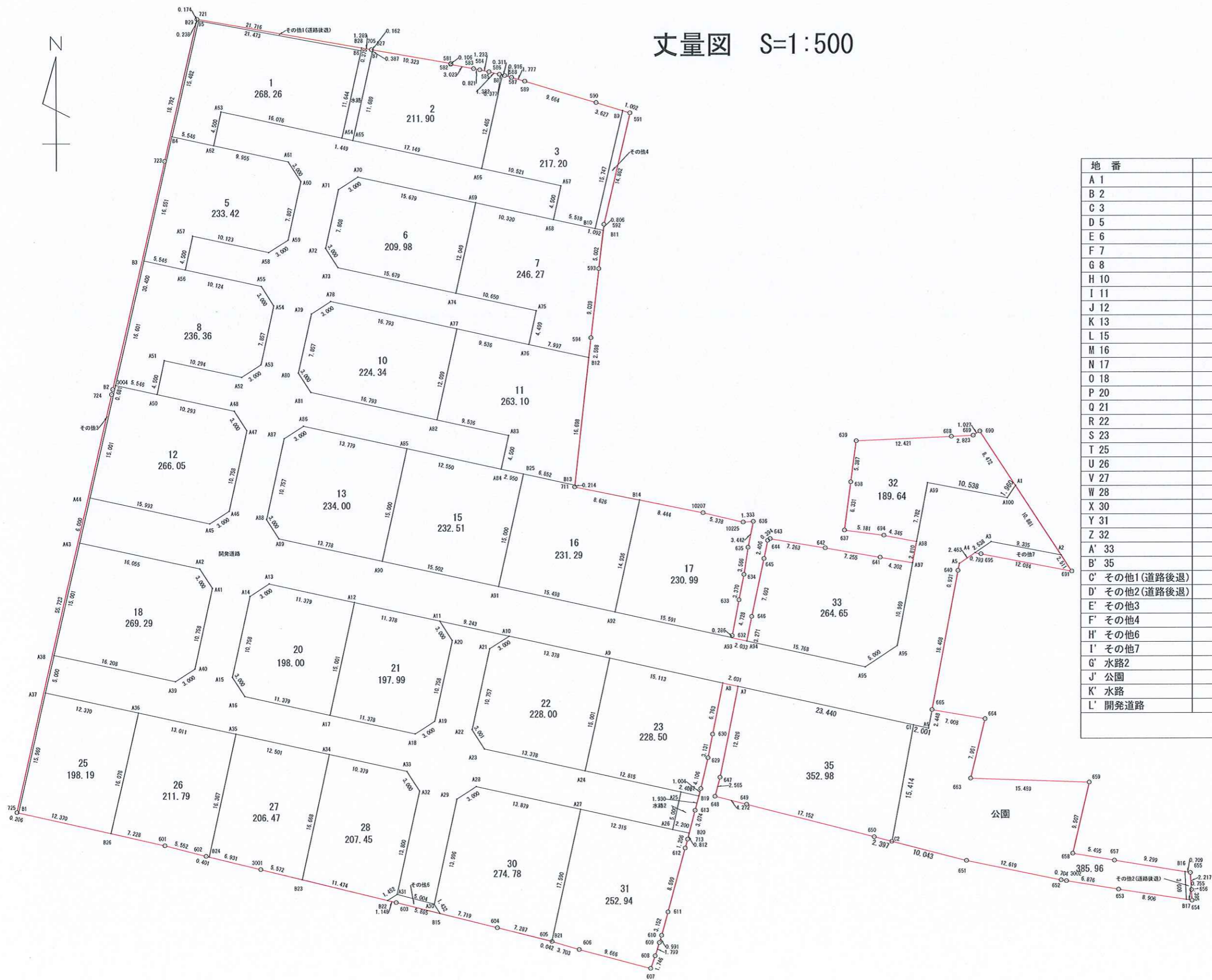


丈量図 S=1:500



地番	面積	
A 1	268.26	m <sup>2</sup>
B 2	211.90	m <sup>2</sup>
C 3	217.20	m <sup>2</sup>
D 5	233.42	m <sup>2</sup>
E 6	209.98	m <sup>2</sup>
F 7	246.27	m <sup>2</sup>
G 8	236.36	m <sup>2</sup>
H 10	224.34	m <sup>2</sup>
I 11	263.10	m <sup>2</sup>
J 12	266.05	m <sup>2</sup>
K 13	234.00	m <sup>2</sup>
L 15	232.51	m <sup>2</sup>
M 16	231.29	m <sup>2</sup>
N 17	230.99	m <sup>2</sup>
O 18	269.29	m <sup>2</sup>
P 20	198.00	m <sup>2</sup>
Q 21	197.99	m <sup>2</sup>
R 22	228.00	m <sup>2</sup>
S 23	228.50	m <sup>2</sup>
T 25	198.19	m <sup>2</sup>
U 26	211.79	m <sup>2</sup>
V 27	206.47	m <sup>2</sup>
W 28	207.45	m <sup>2</sup>
X 30	274.78	m <sup>2</sup>
Y 31	252.94	m <sup>2</sup>
Z 32	189.64	m <sup>2</sup>
A' 33	264.65	m <sup>2</sup>
B' 35	352.98	m <sup>2</sup>
C' その他1(道路後退)	5.95	m <sup>2</sup>
D' その他2(道路後退)	2.60	m <sup>2</sup>
E' その他3	23.37	m <sup>2</sup>
F' その他4	15.74	m <sup>2</sup>
H' その他6	6.14	m <sup>2</sup>
I' その他7	19.98	m <sup>2</sup>
G' 水路2	11.52	m <sup>2</sup>
J' 公園	385.96	m <sup>2</sup>
K' 水路	17.45	m <sup>2</sup>
L' 開発道路	2423.67	m <sup>2</sup>
総合計面積	9489.25	m <sup>2</sup>
宅地	6586.87	
その他	73.78	
道路、公園、水路	2838.60	

所在	高松市下田井町字滝ノ本145他
地番	
作製年月日	令和6年7月7日
作製者	高松市仏生山町甲2130-1 土地家屋調査士・二級建築士 岡野上竜二 宅地建物取引士

求積表

Table A 1: Land area calculation table with columns for NO, Xn, Yn, Yn+1-Yn-1, Xn · (Yn+1-Yn-1), and total area (268.26 m²).

Table B 2: Land area calculation table with columns for NO, Xn, Yn, Yn+1-Yn-1, Xn · (Yn+1-Yn-1), and total area (211.90 m²).

Table C 3: Land area calculation table with columns for NO, Xn, Yn, Yn+1-Yn-1, Xn · (Yn+1-Yn-1), and total area (217.20 m²).

Table D 5: Land area calculation table with columns for NO, Xn, Yn, Yn+1-Yn-1, Xn · (Yn+1-Yn-1), and total area (233.42 m²).

Table E 6: Land area calculation table with columns for NO, Xn, Yn, Yn+1-Yn-1, Xn · (Yn+1-Yn-1), and total area (209.98 m²).

Table F 7: Land area calculation table with columns for NO, Xn, Yn, Yn+1-Yn-1, Xn · (Yn+1-Yn-1), and total area (246.27 m²).

Table G 8: Land area calculation table with columns for NO, Xn, Yn, Yn+1-Yn-1, Xn · (Yn+1-Yn-1), and total area (236.36 m²).

Table H 10: Land area calculation table with columns for NO, Xn, Yn, Yn+1-Yn-1, Xn · (Yn+1-Yn-1), and total area (224.34 m²).

Table I 11: Land area calculation table with columns for NO, Xn, Yn, Yn+1-Yn-1, Xn · (Yn+1-Yn-1), and total area (263.10 m²).

Table J 12: Land area calculation table with columns for NO, Xn, Yn, Yn+1-Yn-1, Xn · (Yn+1-Yn-1), and total area (266.05 m²).

Table K 13: Land area calculation table with columns for NO, Xn, Yn, Yn+1-Yn-1, Xn · (Yn+1-Yn-1), and total area (234.00 m²).

Table L 15: Land area calculation table with columns for NO, Xn, Yn, Yn+1-Yn-1, Xn · (Yn+1-Yn-1), and total area (232.51 m²).

Table M 16: Land area calculation table with columns for NO, Xn, Yn, Yn+1-Yn-1, Xn · (Yn+1-Yn-1), and total area (231.29 m²).

Table N 17: Land area calculation table with columns for NO, Xn, Yn, Yn+1-Yn-1, Xn · (Yn+1-Yn-1), and total area (230.99 m²).

Table O 18: Land area calculation table with columns for NO, Xn, Yn, Yn+1-Yn-1, Xn · (Yn+1-Yn-1), and total area (269.29 m²).

Table P 20: Land area calculation table with columns for NO, Xn, Yn, Yn+1-Yn-1, Xn · (Yn+1-Yn-1), and total area (198.00 m²).

Table Q 21: Land area calculation table with columns for NO, Xn, Yn, Yn+1-Yn-1, Xn · (Yn+1-Yn-1), and total area (197.99 m²).

Table R 22: Land area calculation table with columns for NO, Xn, Yn, Yn+1-Yn-1, Xn · (Yn+1-Yn-1), and total area (228.00 m²).

Table S 23: Land area calculation table with columns for NO, Xn, Yn, Yn+1-Yn-1, Xn · (Yn+1-Yn-1), and total area (228.50 m²).

Table T 25: Land area calculation table with columns for NO, Xn, Yn, Yn+1-Yn-1, Xn · (Yn+1-Yn-1), and total area (198.19 m²).

Table U 26: Land area calculation table with columns for NO, Xn, Yn, Yn+1-Yn-1, Xn · (Yn+1-Yn-1), and total area (211.79 m²).

Table V 27: Land area calculation table with columns for NO, Xn, Yn, Yn+1-Yn-1, Xn · (Yn+1-Yn-1), and total area (206.47 m²).

Table W 28: Land area calculation table with columns for NO, Xn, Yn, Yn+1-Yn-1, Xn · (Yn+1-Yn-1), and total area (207.45 m²).

Table X 30: Land area calculation table with columns for NO, Xn, Yn, Yn+1-Yn-1, Xn · (Yn+1-Yn-1), and total area (274.78 m²).

Table Y 31: Land area calculation table with columns for NO, Xn, Yn, Yn+1-Yn-1, Xn · (Yn+1-Yn-1), and total area (252.94 m²).

Table Z 32: Land area calculation table with columns for NO, Xn, Yn, Yn+1-Yn-1, Xn · (Yn+1-Yn-1), and total area (189.64 m²).

Form containing location (高松市下田井町字滝ノ本145他), date (令和6年7月7日), and creator (高松市仏生山町甲2130-1 土地家屋調査士・二級建築士 岡野上竜二) information.

